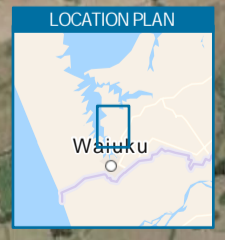
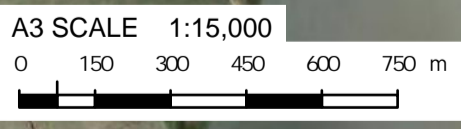


COPYRIGHT NOTICE: THIS FIGURE IS RESERVED. I:\Auckland\Projects\1010577\North\GIS\Map_Document\1010577\Water_Locked.aprx Layout: W-FWE1 - Freshwater - Ecological Monitoring Locations 2024/04/05 3:48pm Drawn by JORB



LEGEND

- Discharge Point
- Macroinvertebrate Sampling Site
- Watercourse
- Artificial Watercourse
- - - Tributary
- - - Spillway
- Fishing Reach
- SEV Site
- Site



Tonkin+Taylor
www.tonkintaylor.co.nz
Exceptional thinking together

NOTES:
Basemap: Sourced from LINZ and licensed for reuse under Creative Commons 4.0

REV	DESCRIPTION	GIS	CHK	DATE	APPROVED	DATE
1	Second version	JORB	CHSA	29/09/22		APR 24
2	Third version	JORB	CHSA	08/03/24		

PROJECT No. 1010577	
DESIGNED	JORB MAR.24
DRAWN	JORB MAR.24
CHECKED	CHSA MAR.24

CLIENT NZ STEEL		
PROJECT RECONSENSING GLENBROOK STEEL MILL		
TITLE FRESHWATER ECOLOGY SAMPLING LOCATIONS		
SCALE (A3) 1:15,000	FIG No. FIGURE W-FWE1	REV 0

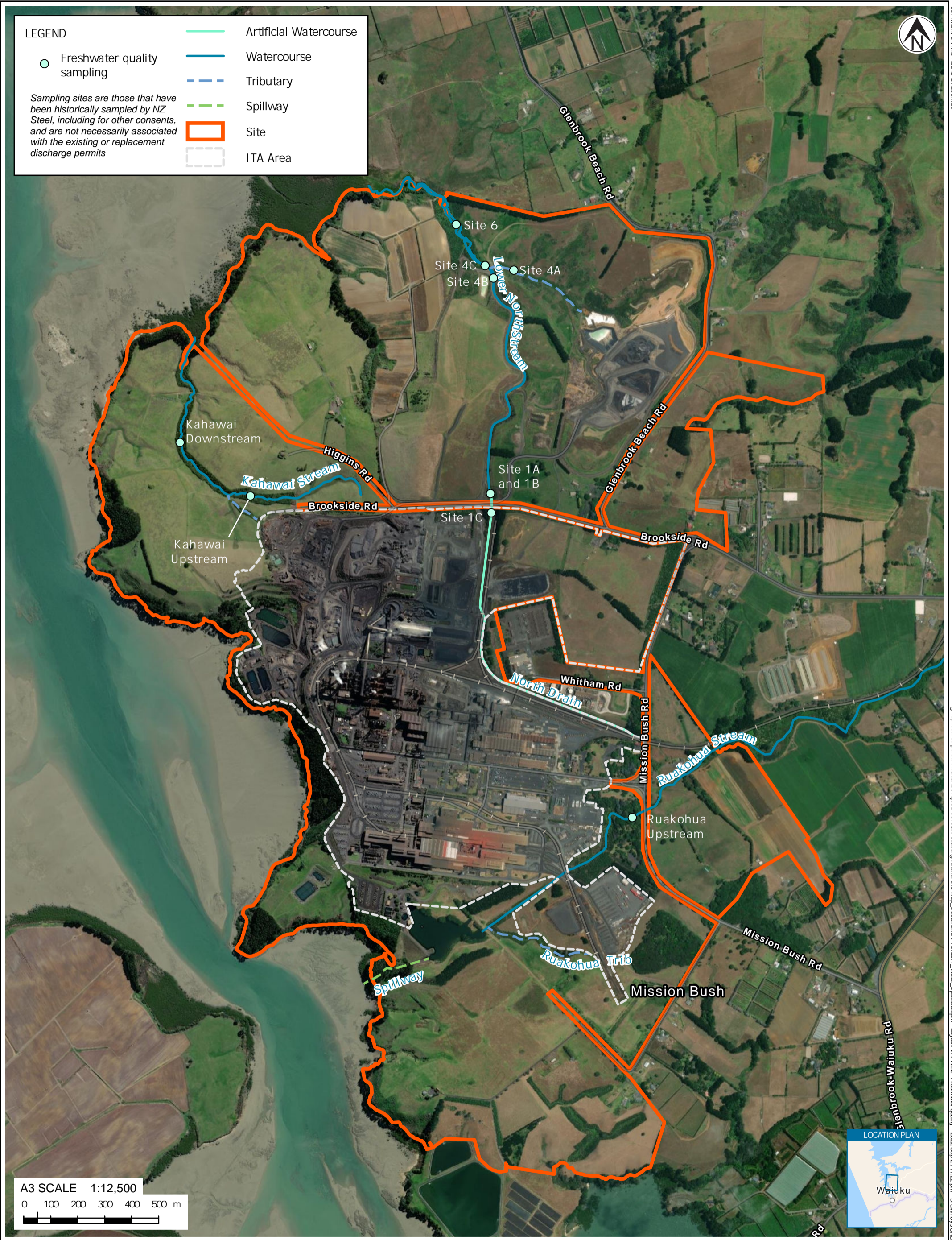
COPYRIGHT ON THIS FIGURE IS RESERVED
 W:\p\local\corporate\munkid\Projects\1010577\Working\Aerial\GIS\Map_Documents\F1010577_Water_Updated.aprx Layout: W-FWE2-Freshwater Quality 2022-Sep-29 11:22 am Drawn by JOR8



LEGEND

- Freshwater quality sampling
- Artificial Watercourse
- Watercourse
- Tributary
- Spillway
- Site
- ITA Area

Sampling sites are those that have been historically sampled by NZ Steel, including for other consents, and are not necessarily associated with the existing or replacement discharge permits



A3 SCALE 1:12,500
 0 100 200 300 400 500 m



Tonkin+Taylor
 www.tonkintaylor.co.nz
 Exceptional thinking together

NOTES:
 Basemap: Sourced from LINZ and licensed for reuse under Creative Commons 4.0

REV	DESCRIPTION	GIS	CHK	DATE	APPROVED	DATE
0	First version	JORB	ANTH	27/06/21	<i>Ant</i>	
1	Second version	JORB	CHSA	29/09/22		

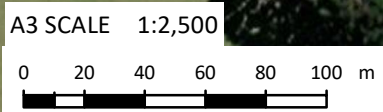
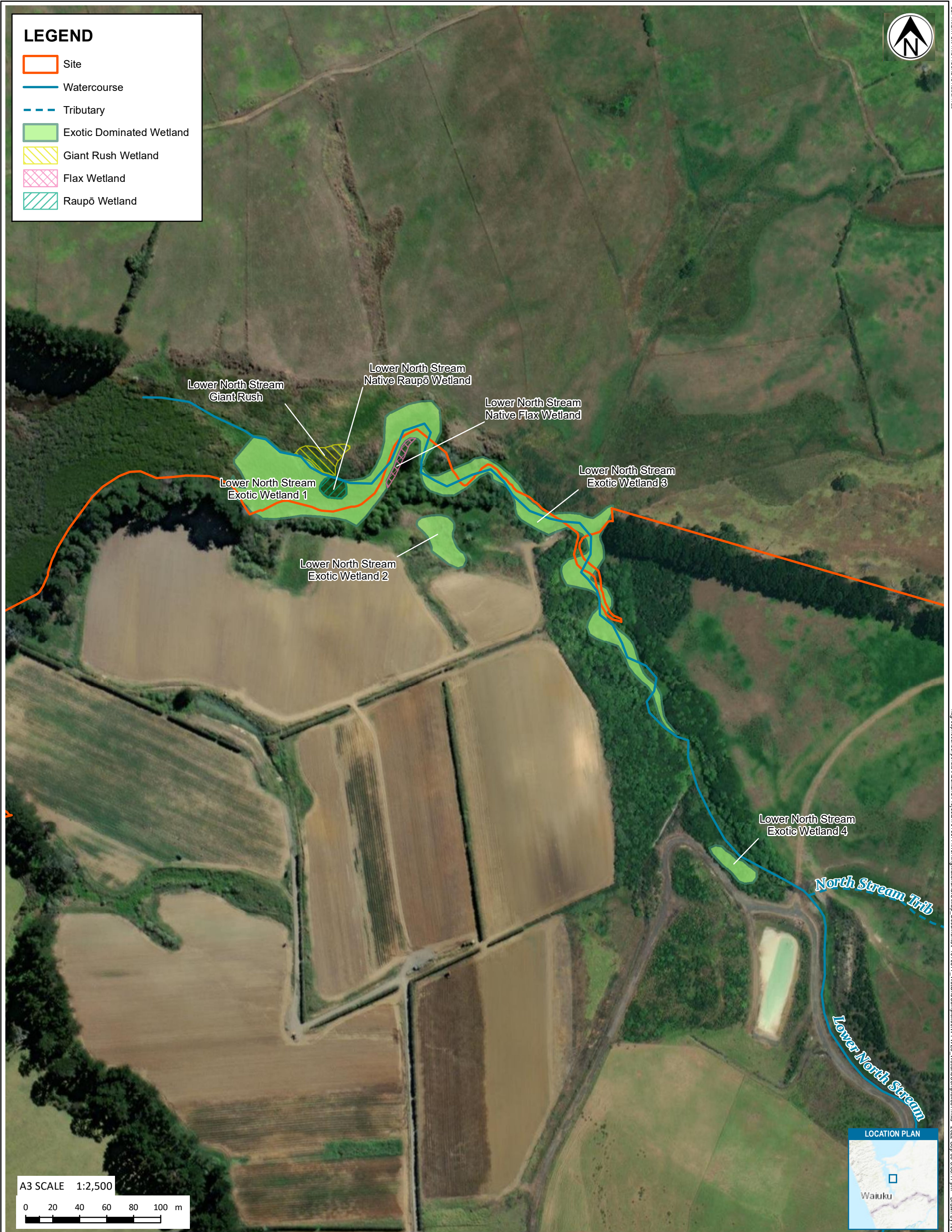
PROJECT No.	1010577		
DESIGNED	JORB	SEP.22	
DRAWN	JORB	SEP.22	
CHECKED	CHSA	SEP.22	

CLIENT	NZ STEEL		
PROJECT	RECONSENSING GLENBROOK STEEL MILL		
TITLE	FRESHWATER DISCHARGE QUALITY MONITORING LOCATIONS (EXISTING AND HISTORICAL)		
SCALE (A3)	1:12,500	FIG No.	FIGURE W-FWE2
REV			1



LEGEND

- Site
- Watercourse
- Tributary
- Exotic Dominated Wetland
- Giant Rush Wetland
- Flax Wetland
- Raupō Wetland



Tonkin+Taylor
www.tonkintaylor.co.nz
Exceptional thinking together

NOTES:
Basemap World Navigation Map: LINZ, Stats NZ, Eagle Technology, Esri, HERE, Garmin, FAO, METI/NASA, Hybrid Reference Layer: Esri Community Maps Contributors, LINZ, Stats NZ, Eagle Technology, Esri, HERE, Garmin, METI/NASA, USGS.
World Imagery: Maxar

0	First Version	ANTH	JORB	28/06/21
REV	DESCRIPTION	GIS	CHK	DATE

PROJECT No.		1010577	
DESIGNED	ANTH	JUN.	21
DRAWN	ANTH	JUN.	21
CHECKED	JORB	JUN.	21

[Signature]

APPROVED	DATE
----------	------

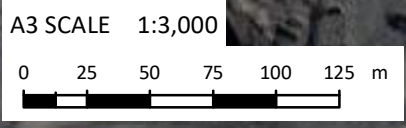
CLIENT	NZ STEEL
PROJECT	RECONSENSING GLENBROOK STEEL MILL
TITLE	WETLAND COMPLEXES 1
SCALE (A3)	1:2,500
FIG No.	FIGURE W-FWE3
REV	0



COPYRIGHT ON THIS FIGURE IS RESERVED
\\group.local\csc\para\huckland\Projects\1010577\WorkingMaterial\GIS\Map_Document\FP 1010577 - WetlandComplexes\FWE4 - WetlandComplexes2.mxd 2022-Sep-30 3:56:23 pm Drawn by ANTH

LEGEND

- Site
- ITA Stormwater Discharge Point
- ITA Stormwater Discharge Point (100m Distance)
- Watercourse
- Tributary
- Exotic Dominated Wetland



Tonkin+Taylor
www.tonkintaylor.co.nz
Exceptional thinking together

NOTES:
Basemap World Navigation Map: LINZ, Stats NZ, Eagle Technology, Esri, HERE, Garmin, FAO, METI/NASA Hybrid Reference Layer: Esri Community Maps Contributors, LINZ, Stats NZ, Eagle Technology, Esri, HERE, Garmin, METI/NASA, USGS.
World Imagery: Maxar

PROJECT No.		1010577	
DESIGNED	ANTH	JUN. 21	
DRAWN	ANTH	JUN. 21	
CHECKED	JORB	JUN. 21	

CLIENT	NZ STEEL
PROJECT	RECONSENSING GLENBROOK STEEL MILL
TITLE	WETLAND COMPLEXES 2

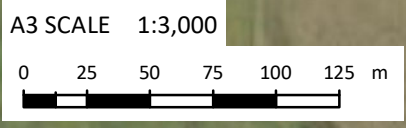
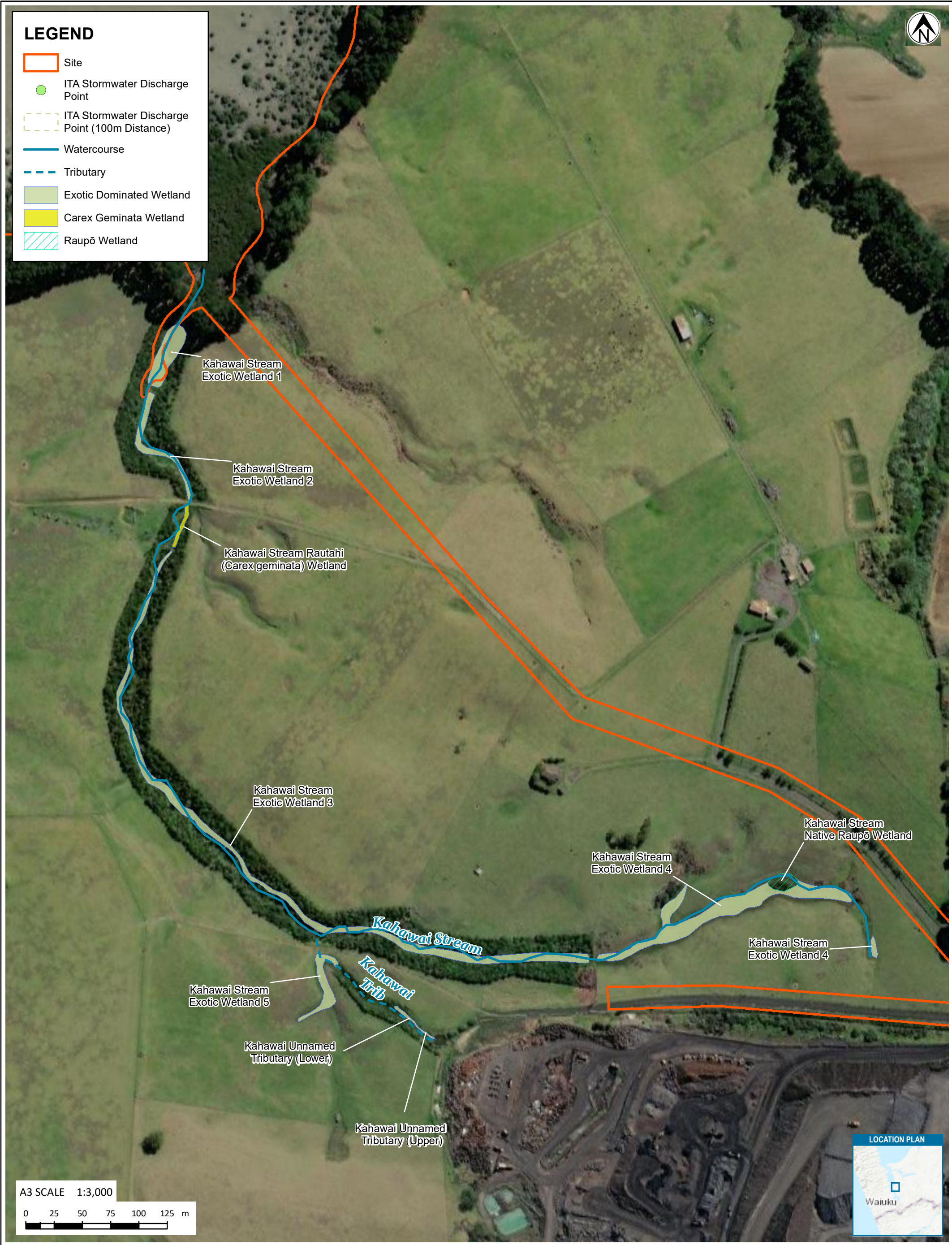
REV	DESCRIPTION	GIS	CHK	DATE	APPROVED	DATE
0	First Version	ANTH	JORB	28/06/21		

SCALE (A3)	1:3,000	FIG No.	FIGURE W-FWE4	REV	0
------------	---------	---------	---------------	-----	---



LEGEND

- Site
- ITA Stormwater Discharge Point
- ITA Stormwater Discharge Point (100m Distance)
- Watercourse
- Tributary
- Exotic Dominated Wetland
- Carex Geminata Wetland
- Raupō Wetland



Tonkin+Taylor
www.tonkintaylor.co.nz
Exceptional thinking together

NOTES:
Basemap World Navigation Map: LINZ, Stats NZ, Eagle Technology, Esri, HERE, Garmin, FAO, METI/NASA, Hybrid Reference Layer: Esri Community Maps Contributors, LINZ, Stats NZ, Eagle Technology, Esri, HERE, Garmin, METI/NASA, USGS.
World Imagery: Maxar

0	First Version	ANTH	JORB	28/06/21
REV	DESCRIPTION	GIS	CHK	DATE

PROJECT No.		1010577	
DESIGNED	ANTH	JUN. 21	
DRAWN	ANTH	JUN. 21	
CHECKED	JORB	JUN. 21	

APPROVED		DATE	
----------	--	------	--

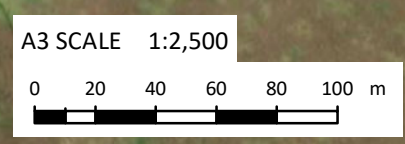
CLIENT	NZ STEEL		
PROJECT	RECONSENSING GLENBROOK STEEL MILL		
TITLE	WETLAND COMPLEXES 3		
SCALE (A3)	1:3,000	FIG No.	FIGURE W-FWE5
REV	0		

COPYRIGHT ON THIS FIGURE IS RESERVED
I:\gpon\local\corporate\Wetland\Projects\10_10577\WetlandComplexes\GIS\Map_Documents\F10_10577_WetlandComplexes\FWE6_WetlandComplexes4.mxd 2021-Aug-10 1:02:29 pm Drawn by ANTH



LEGEND

- Site
- ITA Stormwater Discharge Point
- ITA Stormwater Discharge Point (100m Distance)
- Watercourse
- Tributary
- Exotic Dominated Wetland



Tonkin+Taylor
www.tonkintaylor.co.nz
Exceptional thinking together

NOTES:
Basemap World Navigation Map: LINZ, Stats NZ, Eagle Technology, Esri, HERE, Garmin, FAO, METI/NASA Hybrid Reference Layer: Esri Community Maps Contributors, LINZ, Stats NZ, Eagle Technology, Esri, HERE, Garmin, METI/NASA, USGS. World Imagery: Maxar

PROJECT No.		1010577	
DESIGNED	ANTH	JUN. 21	
DRAWN	ANTH	JUN. 21	
CHECKED	JORB	JUN. 21	

CLIENT	NZ STEEL
PROJECT	RECONSENTING GLENBROOK STEEL MILL
TITLE	WETLAND COMPLEXES 4

0	First Version	ANTH	JORB	28/06/21	<i>[Signature]</i>	
REV	DESCRIPTION	GIS	CHK	DATE	APPROVED	DATE

SCALE (A3)	1:2,500	FIG No.	FIGURE W-FWE6	REV	0
------------	---------	---------	---------------	-----	---